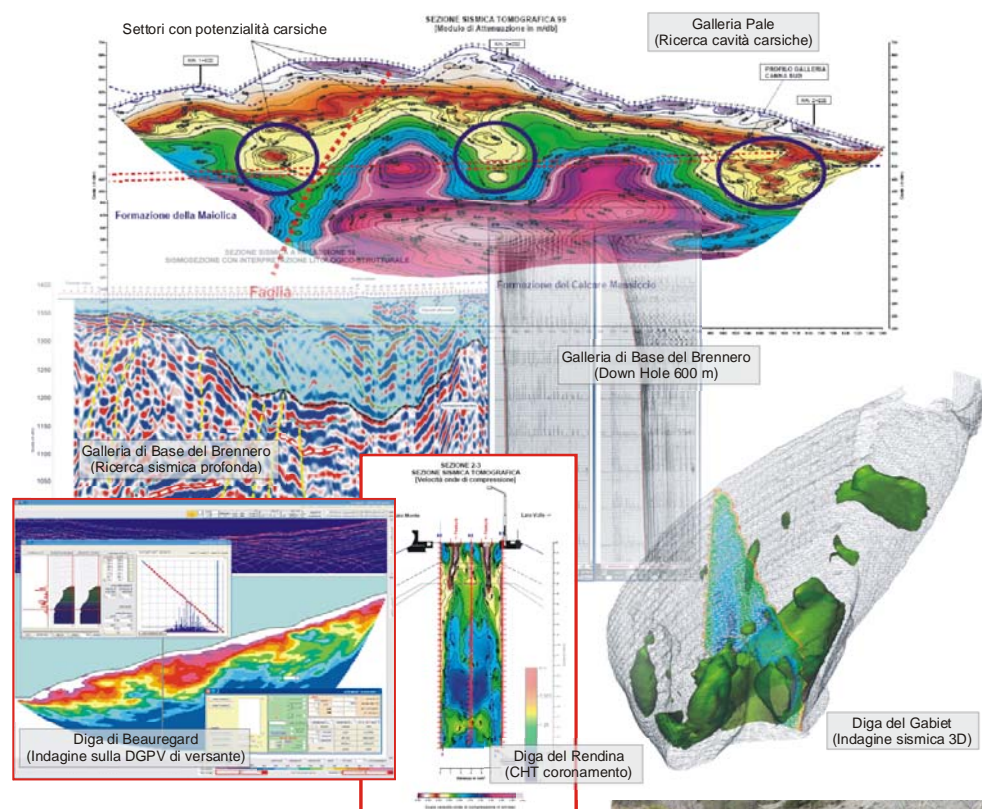


INDAGINI GEOFISICHE APPLICATE

Indagini per gallerie



PROGEO srl

Via Talete 10/8
47100 Forlì
tel. 0543 -723580
fax. 0543 721486
mail.progeo@gmail.com
www.progeo.info

CASE HISTORY

GALLERIA PALE

GALLERIA VARANO

GALLERIA BUTTOLI

GALLERIA SCUDEDDARO

GALLERIA IDRAULICA
CERESOLE-ROSONE

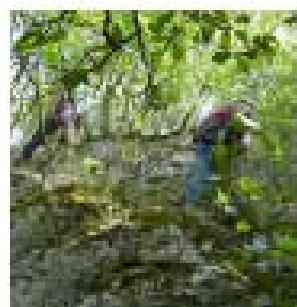
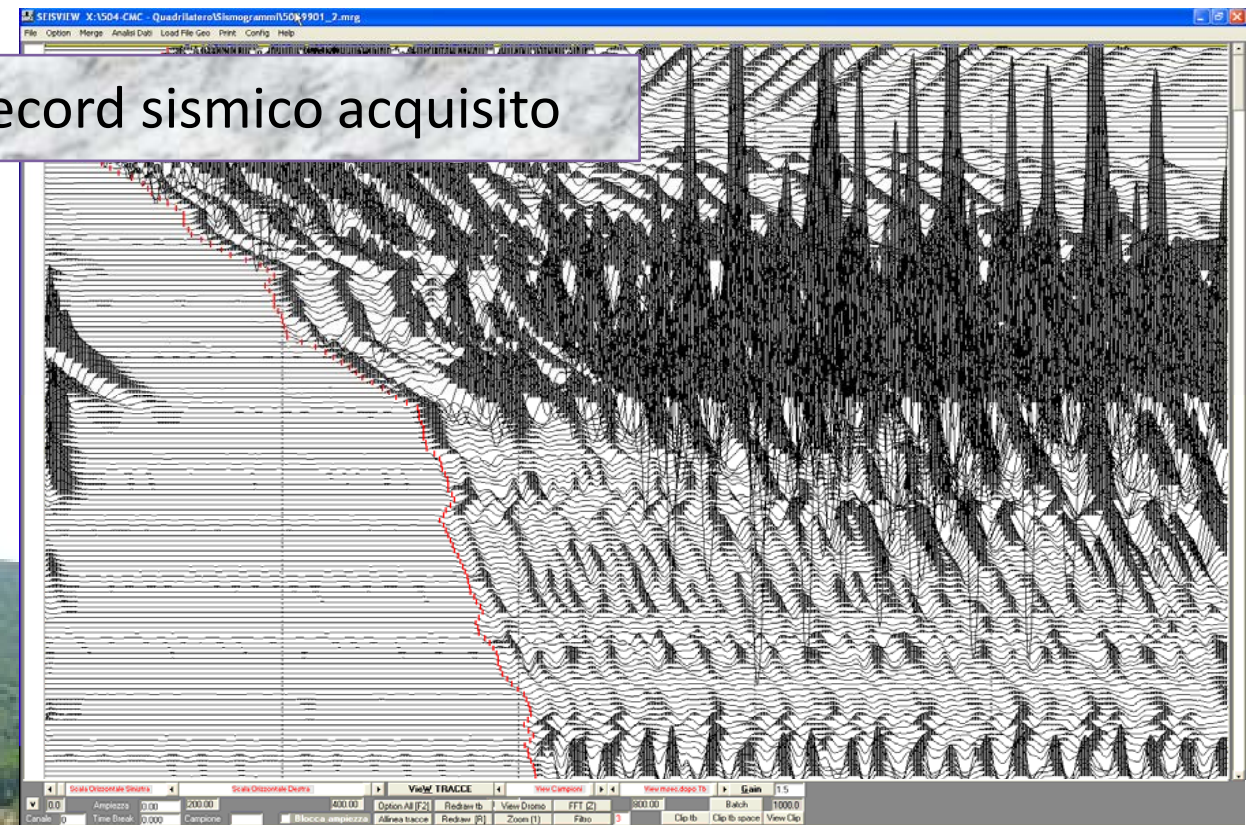


GALLERIA PALE

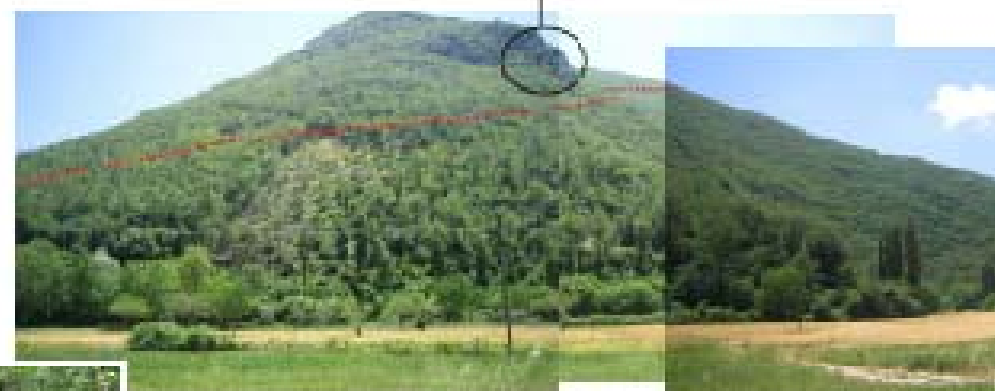
CLIENTE: VAL DI CHIENZI SCRL (2006)

LOCALITA': MACERATA

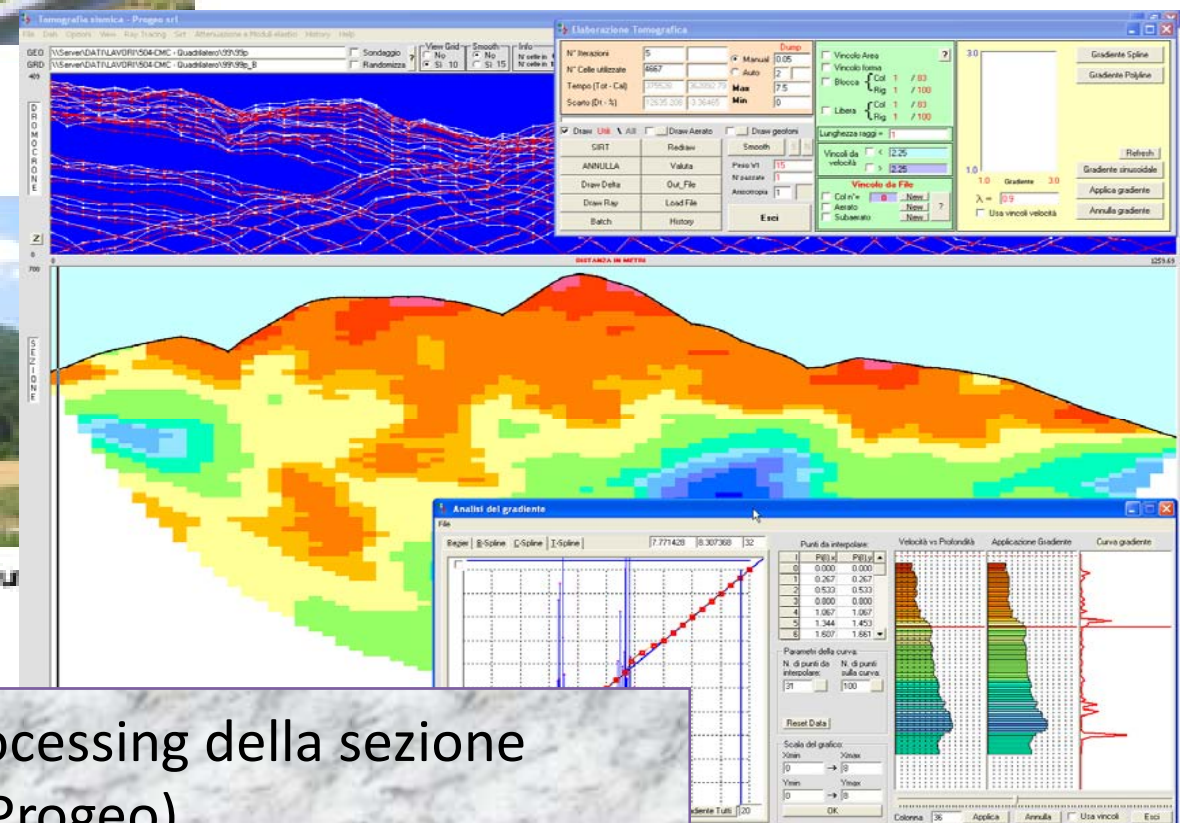
Esempio di record sismico acquisito



Attività di cantiere



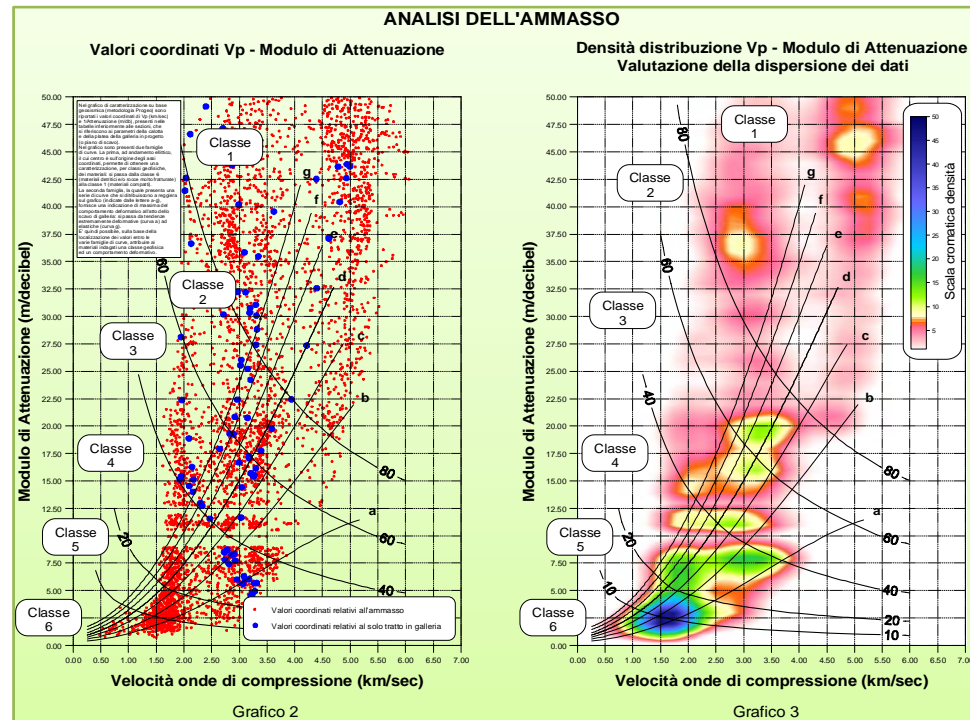
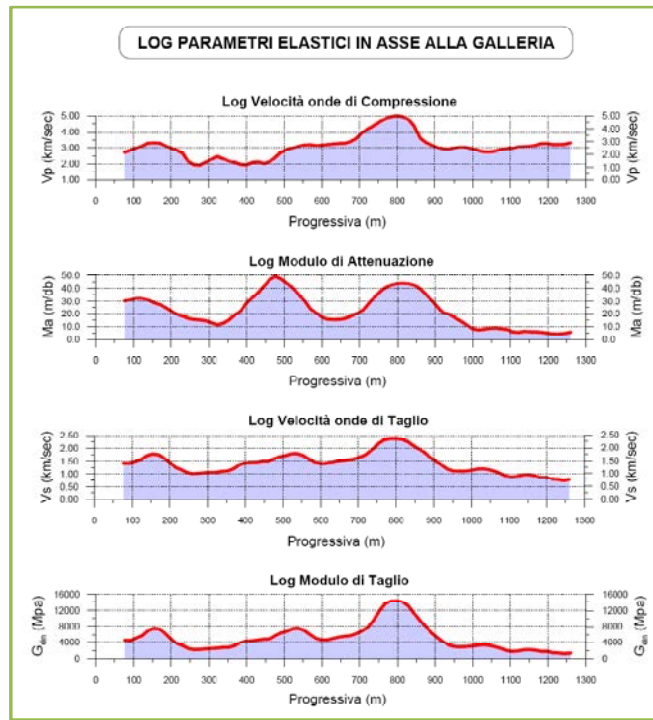
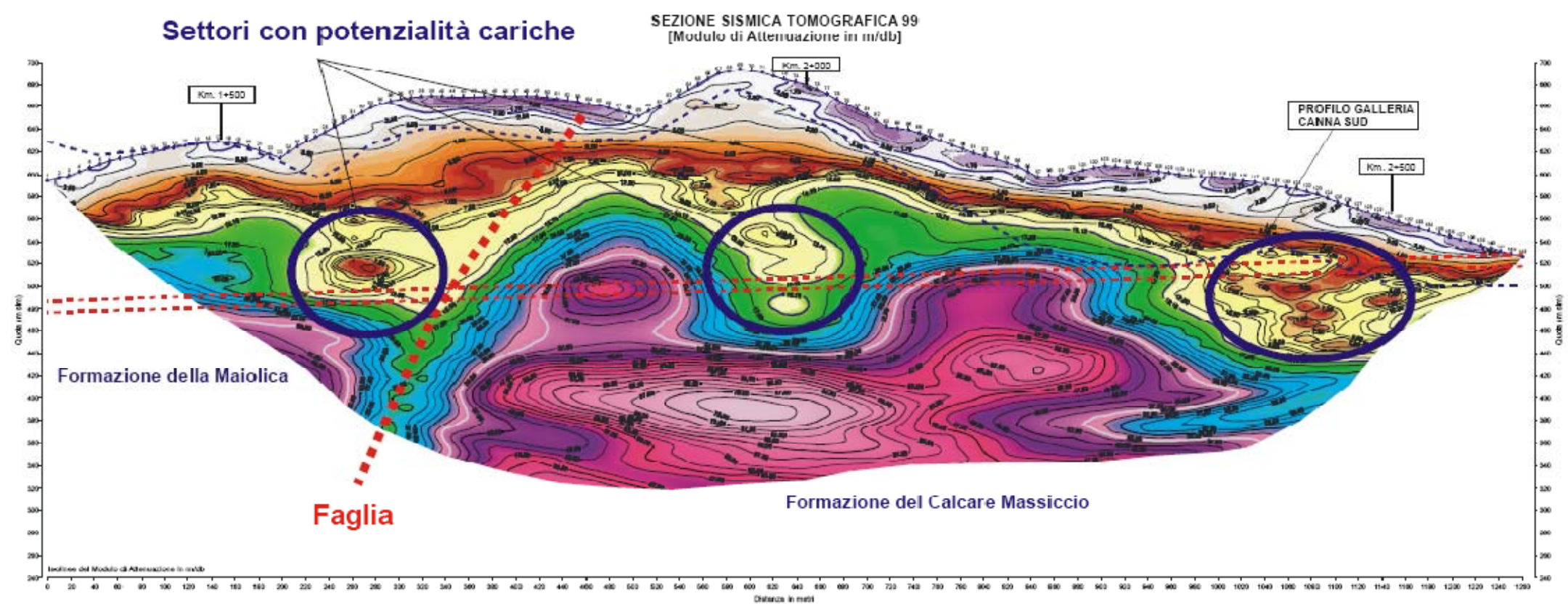
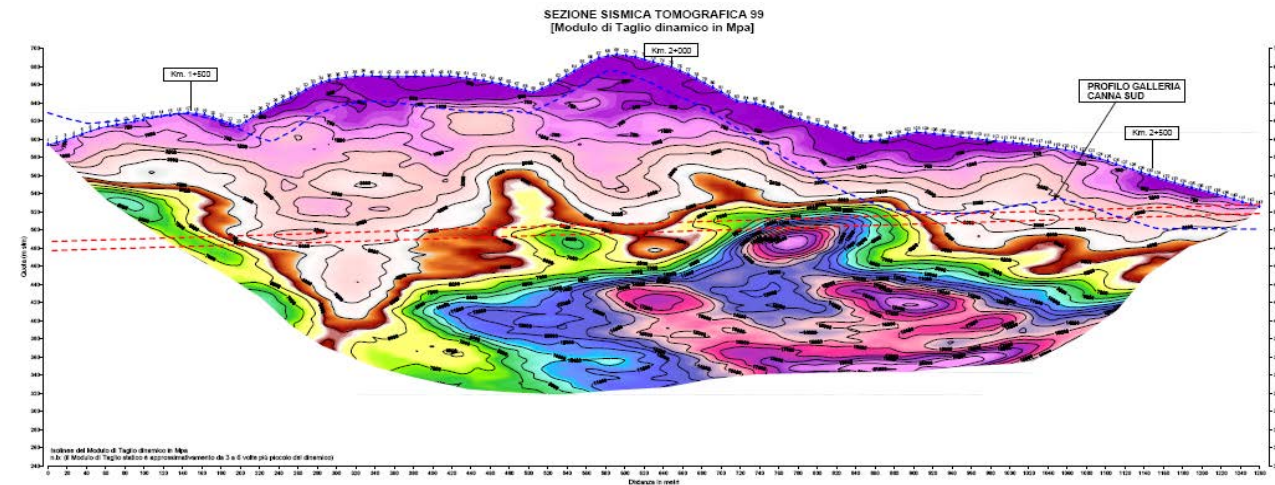
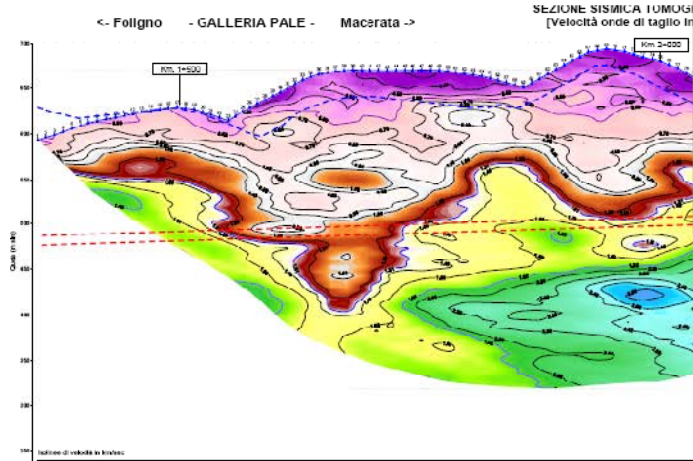
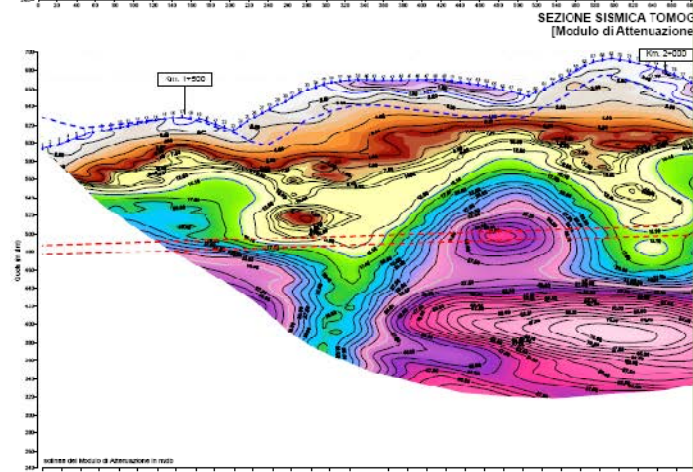
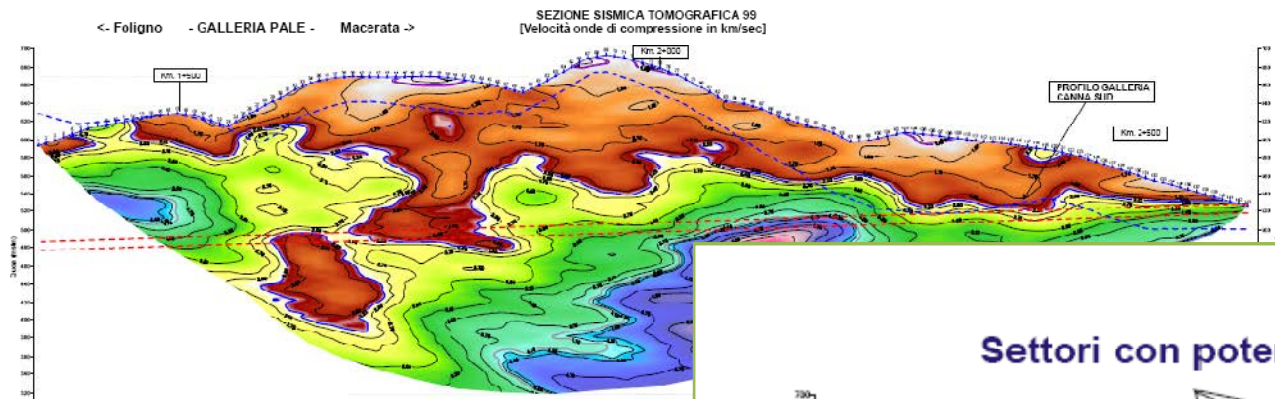
Settore d'imbocco Est (fiume)



Clip del processing della sezione (Software Progeo)



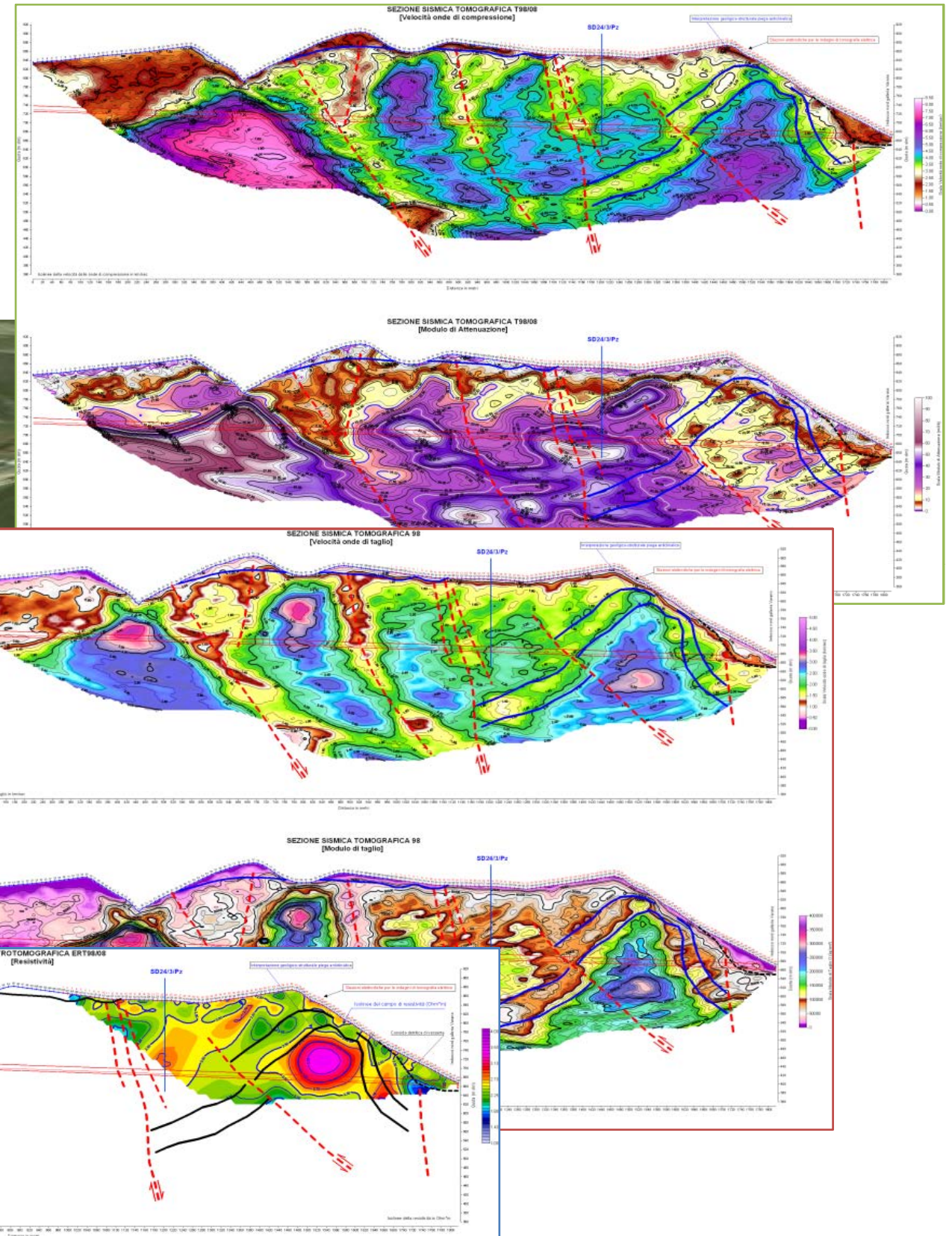
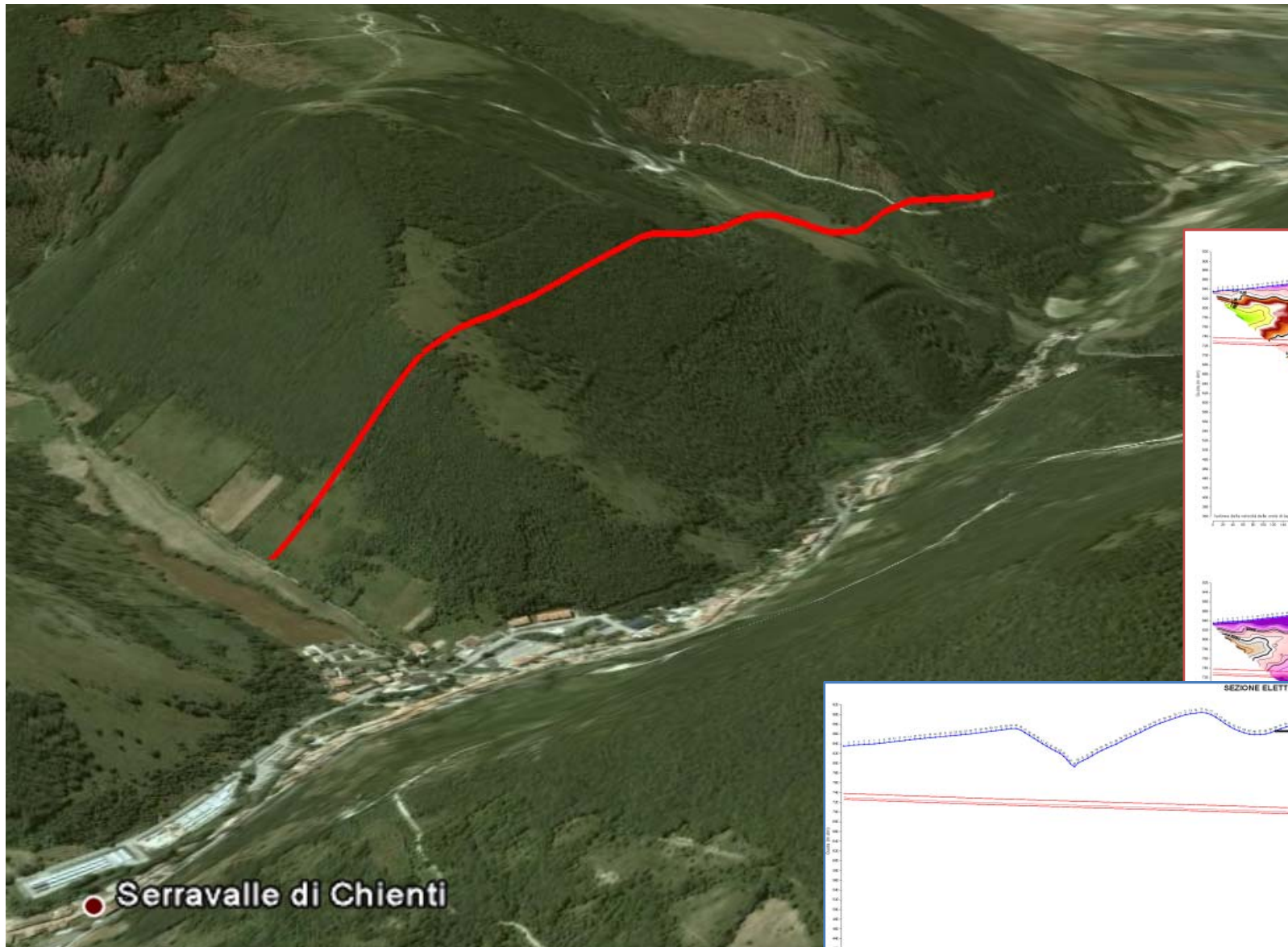
GALLERIA PALE



GALLERIA VARANO

CLIENTE: VAL DI CHIANTI SCRL (2008)

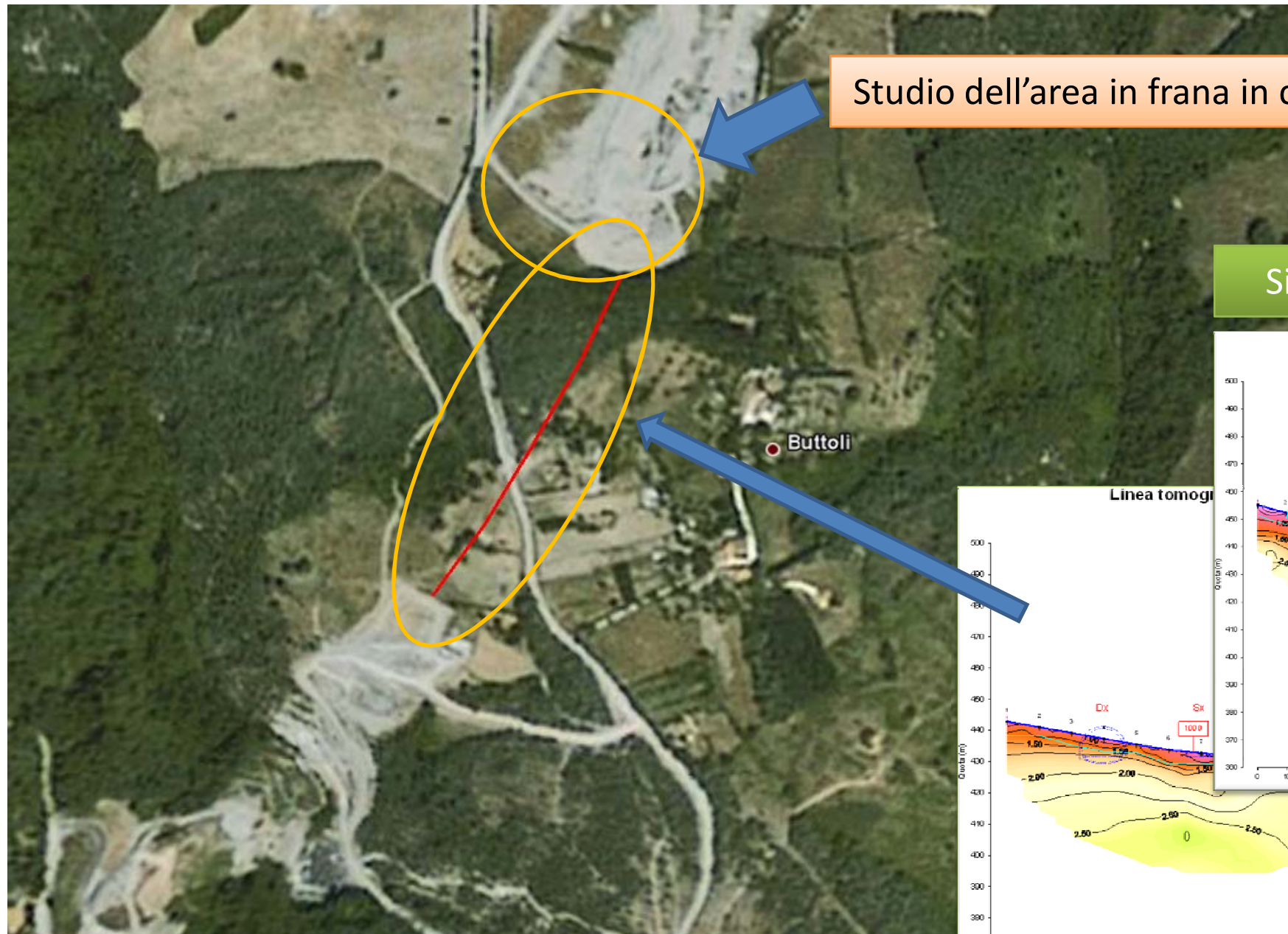
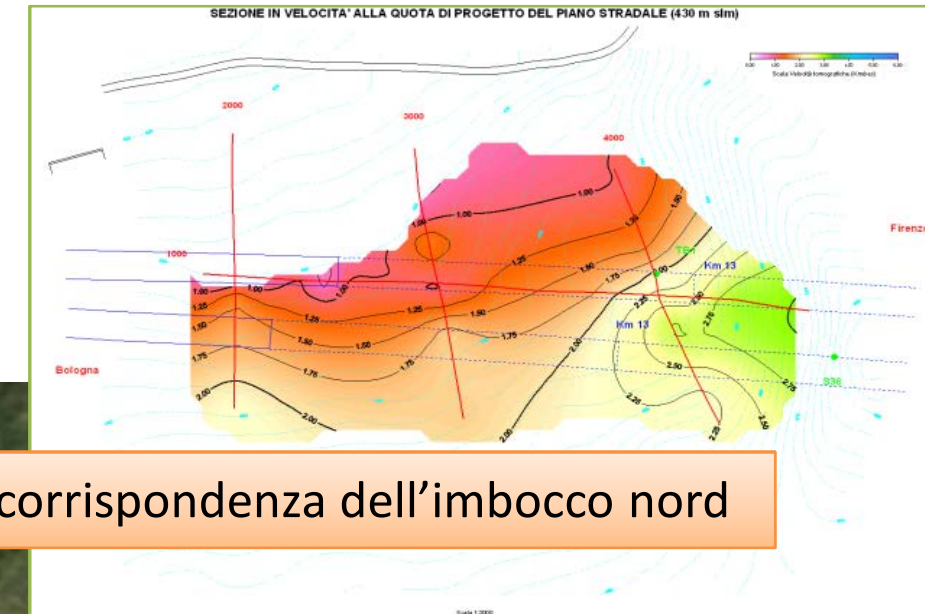
LOCALITA': COLFIORITO



GALLERIA BUTTOLI

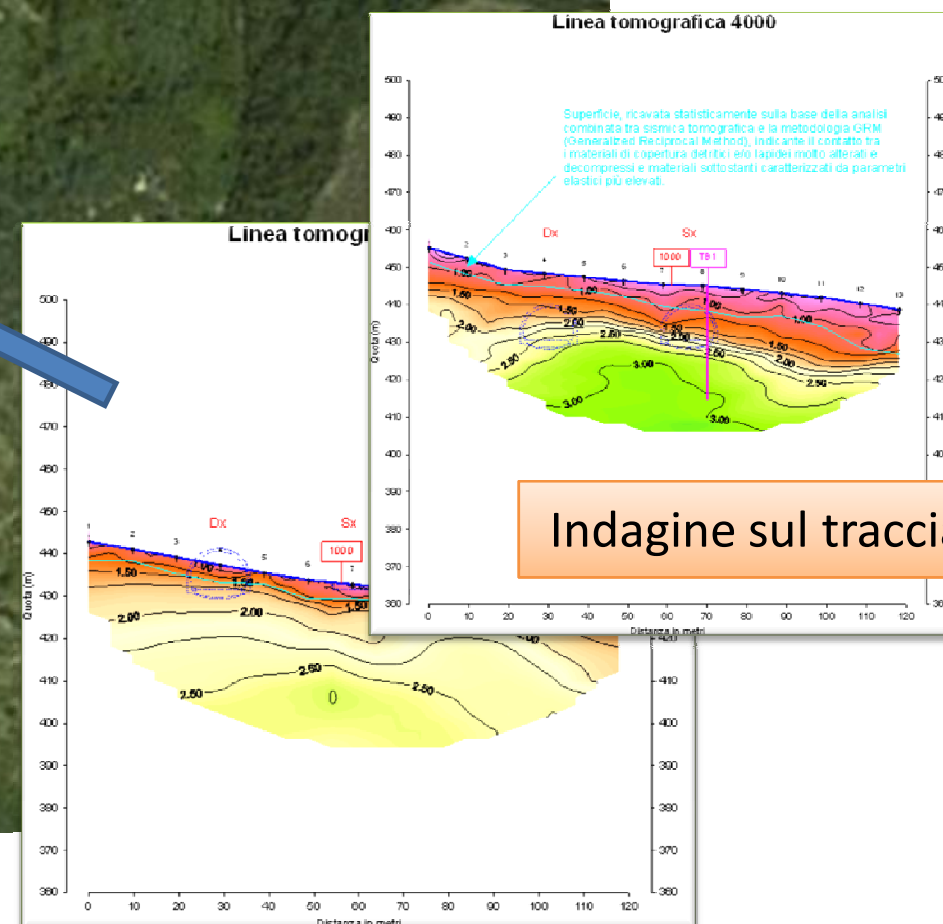
CLIENTE: SPEA (1999) – BTP (2008)

LOCALITA': BARBERINO DI MUGELLO



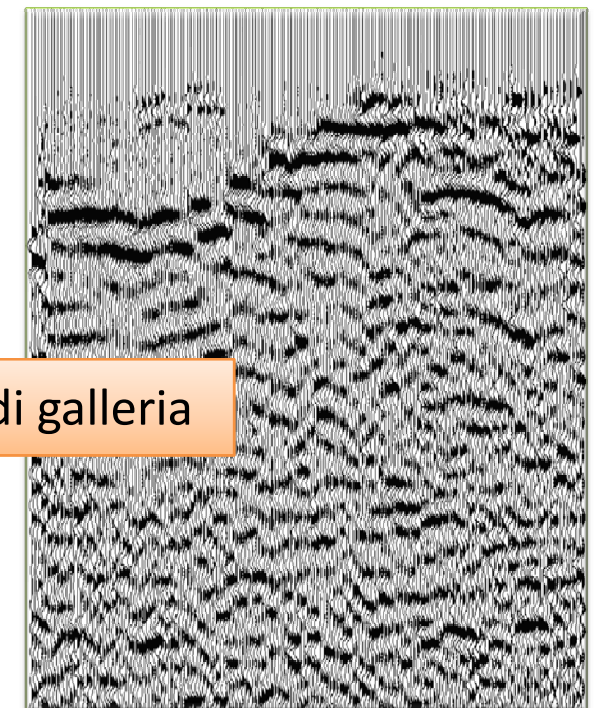
Studio dell'area in frana in corrispondenza dell'imbocco nord

Sismica tomografica



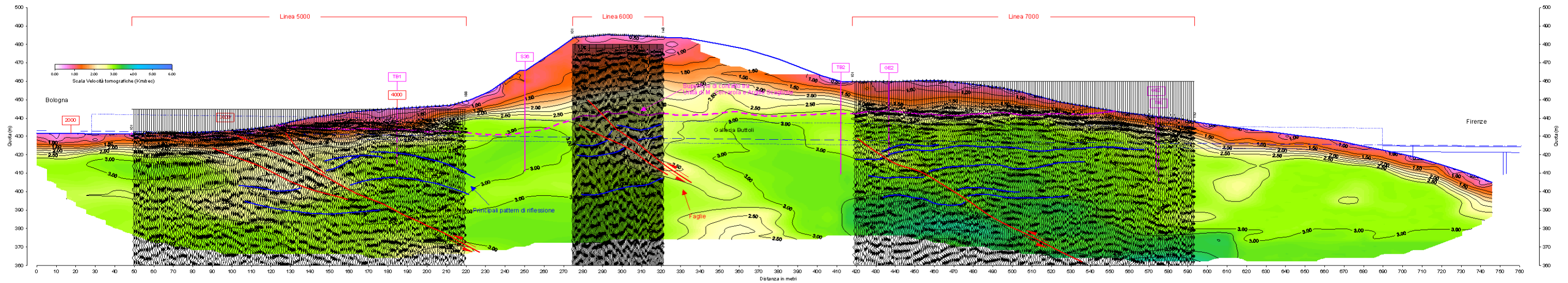
Indagine sul tracciato di galleria

Sismica a riflessione

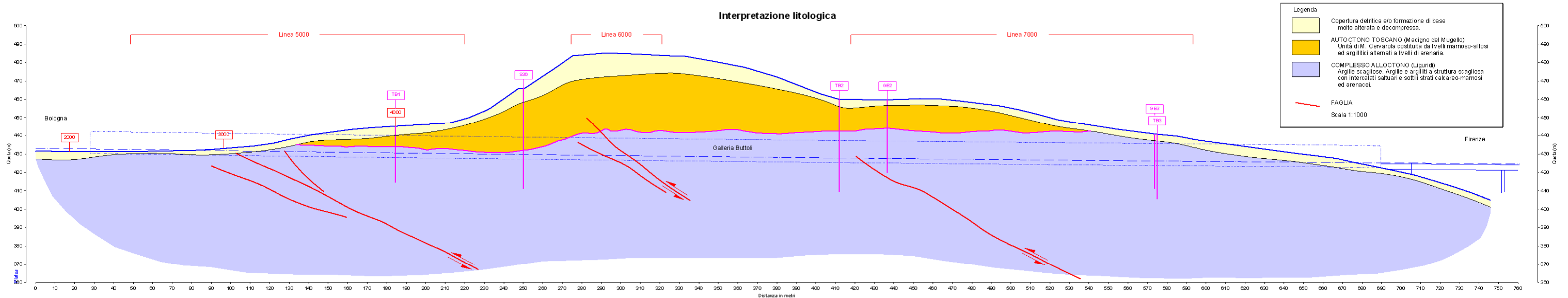


GALLERIA BUTTOLI

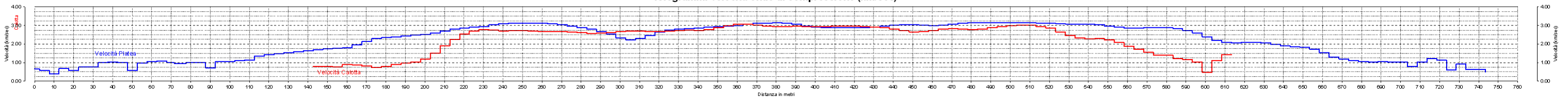
Sismosezioni a Riflessione (Migrazione) associate a Sezione tomografica linea 1000



Interpretazione litologica



Istogrammi velocità onde di compressione (km/sec)



GALLERIA SCUDEDDARO

CLIENTE: STRABAG (2008)

LOCALITA': MESSINA

Fornello in fronte fresa con drenaggio dell'ammasso lapideo.

Obiettivi dell'indagine geofisica:

- Valutazione dello stato di fratturazione dell'ammasso;
- Localizzazione dei settori tettonizzati e faglie;
- Valutazione della conducibilità d'ammasso;
- Localizzazione falde idriche sospese ed imprigionate.



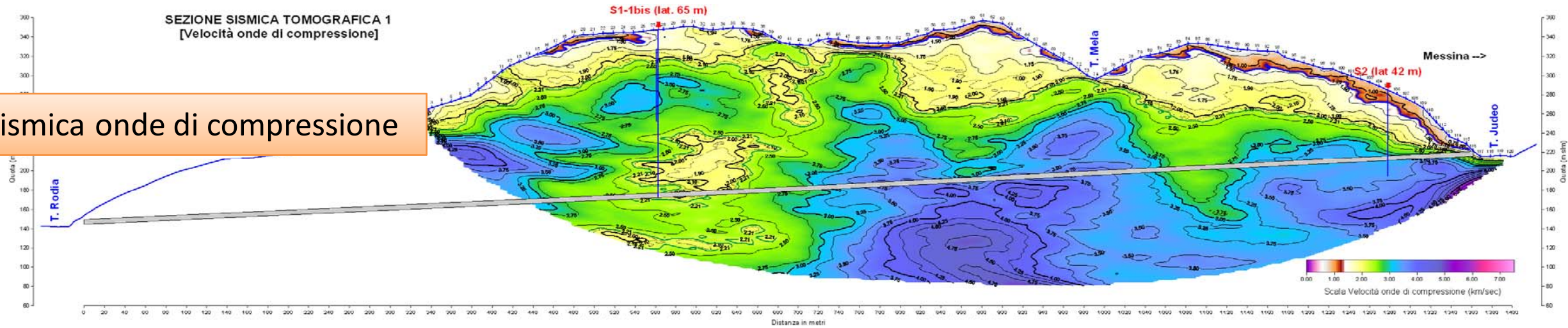
**INDAGINE GEOFISICA
SULL'INTERO TRACCIATO**

Sezione sismica tomografica
Indagine tomoelettrica

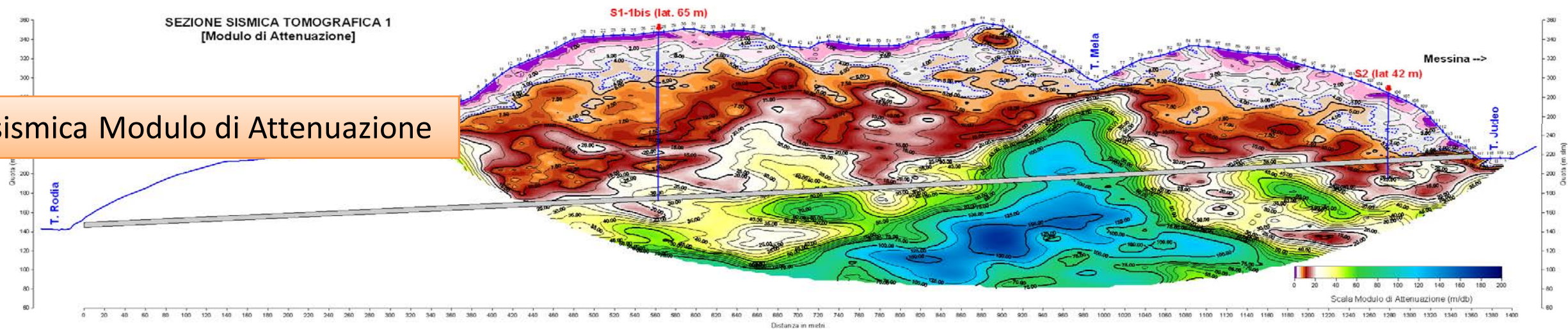
Fornello (Fresa incagliata)

GALLERIA SCUDEDDARO

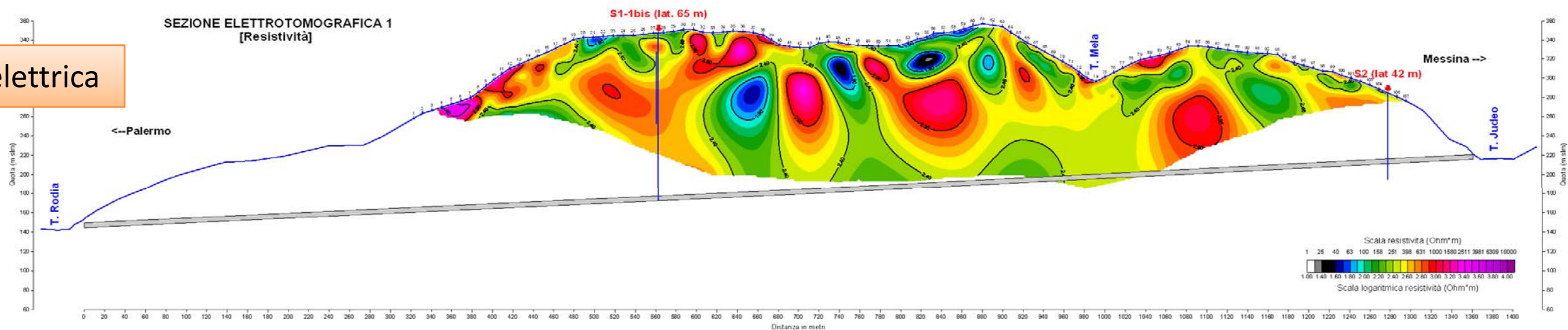
Tomografia sismica onde di compressione



Tomografia sismica Modulo di Attenuazione

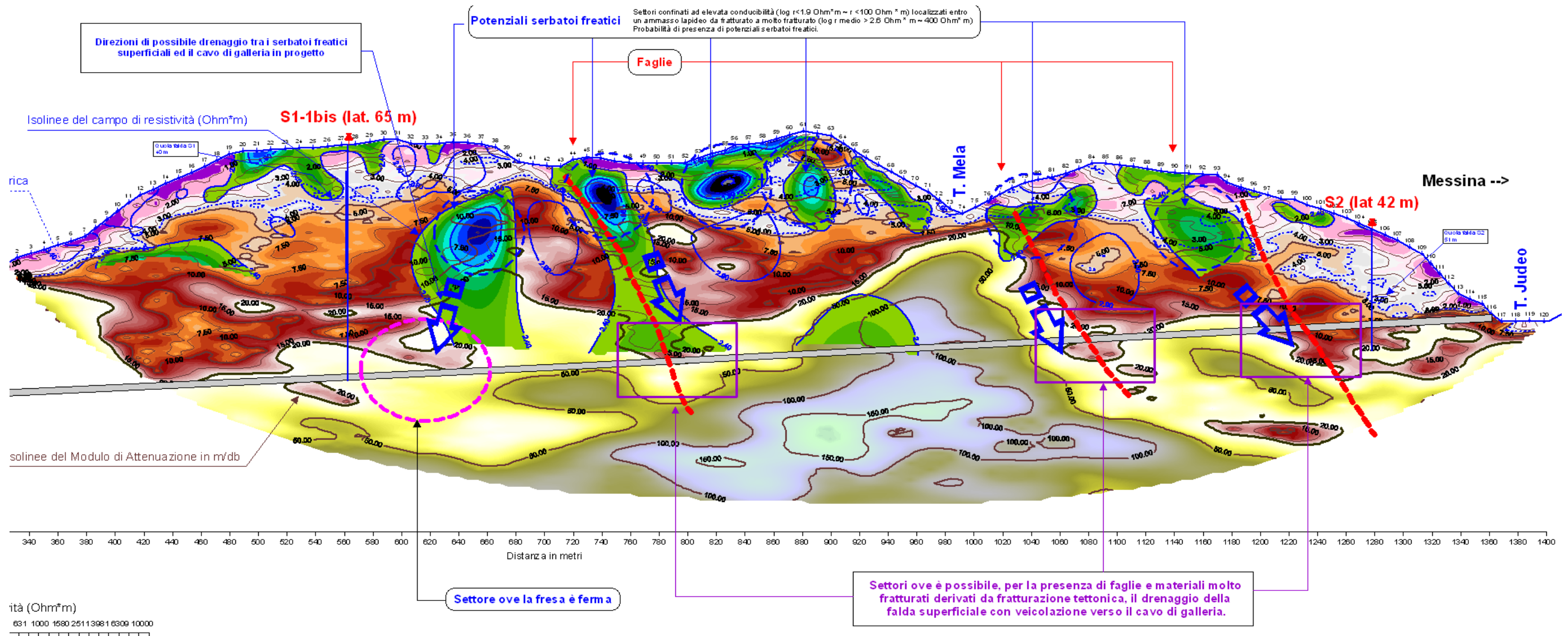


Tomografia elettrica



GALLERIA SCUDEDDARO

SEZIONE GEOFISICA INTERPRETATA



GALLERIA IDRAULICA CERESOLE-ROSONE

CLIENTE: AEM (2006)

LOCALITA': LOCANA (TO)

Sezioni sismiche tomografiche profonde

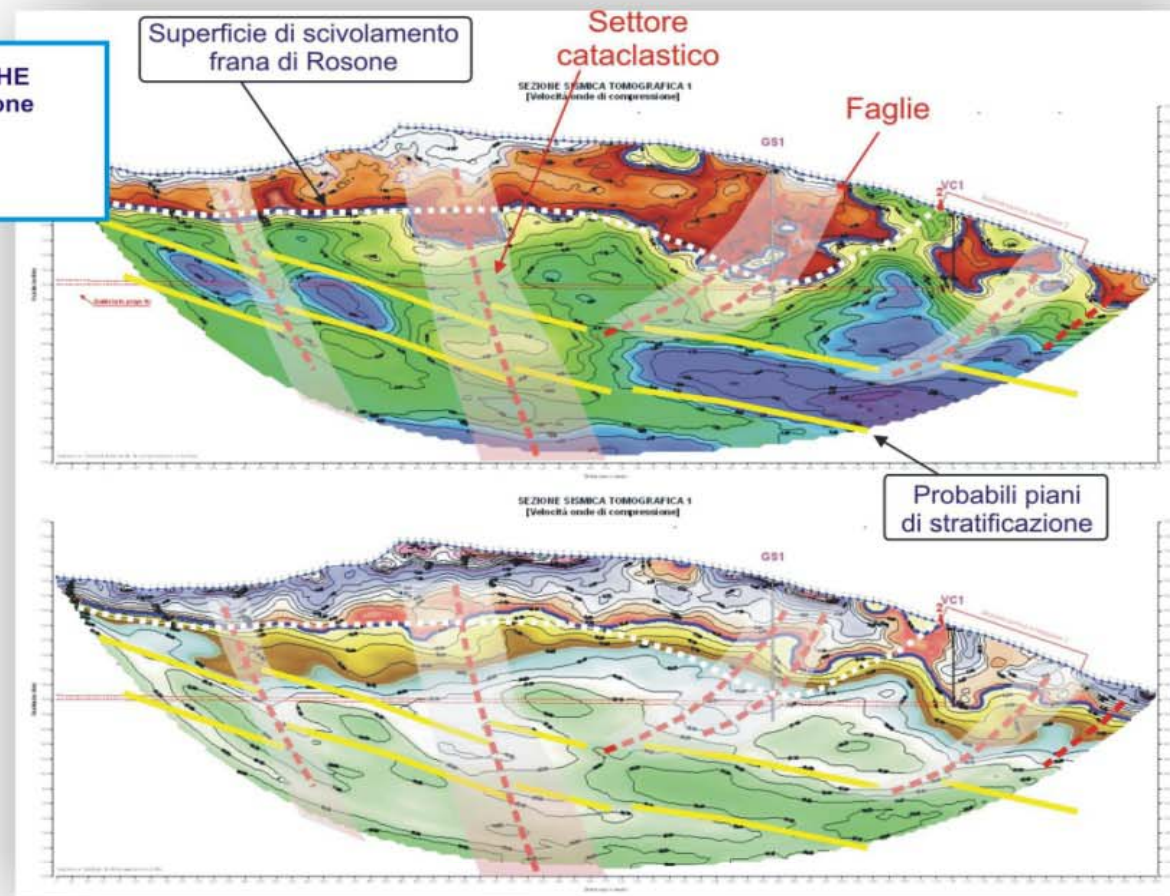
Sezioni sismiche a riflessione ad alta risoluzione



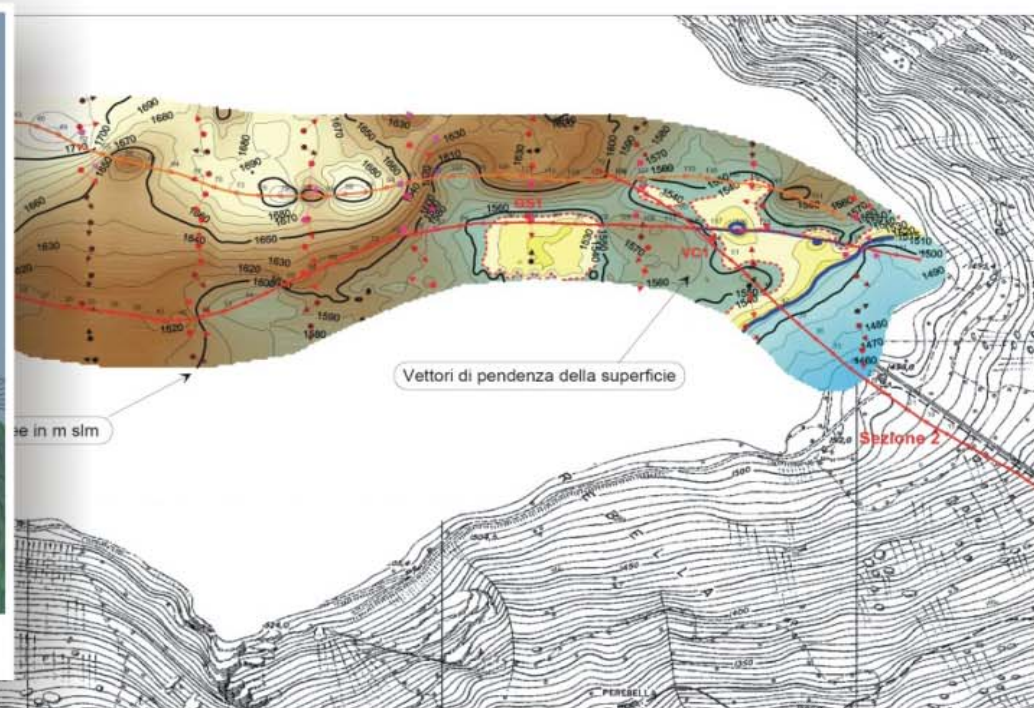
GALLERIA IDRAULICA CERESOLE-ROSONE

INDAGINI SISMICHE TOMOGRAFICHE
 Velocità onde di compressione
 Modulo di Attenuazione

INDAGINI SISMICHE RIFLESSIONE



PLANIMETRIA DEL TETTO DELLA FORMAZIONE COMPATTA
 (BASE DEL CORPO DELLA FRANA DI ROSONE)
 ISOSUPERFICIE IN VELOCITA' DELLE ONDE DI COMPRESSIONE (Vp=2.22 km/sec)



PROCESSING DATI - Software
 SRA (Progeo) per elaborazione sismica tomografica
 SPW (Parallel Geoscience) per elaborazione sismica a riflessione

